

Versión beta | Beta Version

Nivel 2, Lección 17 | Level 2, Lesson 17

*** | Portamento length (4) given by Weissenborn

[Digitaciones](#) | [Fingerings](#) || [Drones](#) || [Métodos de estudio](#) | [Practice Methods](#)

Técnica | Technique

1. Escala | Scale

Ewell

♩ = 80

Ewell



3. Articulación | Articulation

♩ = 60 also mm. 70 & 80

Ewell



4. Entonación y sincronización | Intonation and Synchronization

$\text{♩} = 100$ Ewell

Bassoon

Snare Drum

Claves

Wood Blocks

Tambourine

Bsn.

SD

Clv.

Wd. Bl.

Tamb.

Bsn.

SD

Clv.

Wd. Bl.

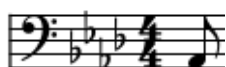
Tamb.

mp3, percusión (percussion) mm. [80](#) | [90](#) | [100](#) | [120](#)

5. Tocar en eco | Echo Playing

Escucha la música y luego tócala. El ejercicio completo está al final de la lección |
Listen to the music and then play it. The full exercise is at the end of the lesson.

♩ = 80



Eco | Echo: [442](#) | [440](#)

Estudio | Etude

3 3 3 3 ...
Moderato.

Weissenborn, Op. 8/1, pp.7-8



4 4 4 4
Andante sostenuto.

D. PORTAMENTO.

Ausführung:
Execution:



Suriname

Ala presi komisi d'a botri

Canción folk | Folk Song

arr. Ewell

Musical score for 'Ala presi komisi d'a botri' in bass clef, 4/4 time, and B-flat major. The score consists of four staves. The first staff starts with a treble clef and a 4/4 time signature. The second staff begins with a measure rest labeled '5'. The third staff begins with a measure rest labeled '9'. The fourth staff begins with a measure rest labeled '13'. The piece concludes with a double bar line.

Bigi kaiman

Canción folk | Folk Song

arr. Ewell

Musical score for 'Bigi kaiman' in bass clef, 4/4 time, and B-flat major. The score consists of two staves. Both staves feature first and second endings, indicated by '1.' and '2.' above the notes. The first ending on the second staff concludes with a double bar line.

Lolo Mi Boto
Canción folk | Folk Song

Arr. by Ewell

Musical score for 'Lolo Mi Boto' in bass clef, 4/4 time, key of B-flat major. The score consists of three staves of music. The first staff starts at measure 1 and ends at measure 5. The second staff starts at measure 6 and ends at measure 11. The third staff starts at measure 12 and ends at measure 16. The music features a mix of eighth and quarter notes with some beamed eighth notes.

A di mi yere yu friyari
Canción de cumpleaños | Birthday Song

*** | Also Known as the Battle Hymn of the Republic (William Steffe, 1856)

arr. Ewell

Musical score for 'A di mi yere yu friyari' in bass clef, 4/4 time, key of D major. The score is arranged for two bassoon parts. The first system shows measures 1 through 5. The second system shows measures 6 through 10. The music is characterized by a steady eighth-note accompaniment in the lower part and a melody in the upper part.

mp3: fagot (bassoon) 1 | fagot (bassoon) 2

*** | National Anthem of Suriname (by Trefosa)

<https://images.app.goo.gl/Scoe4nNnYszfp58p6>

arr. Ewell

The image displays a musical score for two fagot (bassoon) parts, numbered 1 and 2. The score is written in bass clef with a key signature of three sharps (F#, C#, G#) and a common time signature (C). The music is arranged in four systems, each containing two staves. The first system (measures 1-5) features a dynamic of *f* in the first staff and *mf* in the second. The second system (measures 6-10) shows dynamics of *mf* and *mp* in the first staff, and *p* in the second. The third system (measures 11-14) includes dynamics of *mf* and *f*. The fourth system (measures 15-18) concludes the piece with a double bar line. The notation includes various note values, rests, and slurs.

mp3: fagot (bassoon) 1 | fagot (bassoon) 2

Extracto | Excerpt

Richard Strauss, Death and Transfiguration, Op. 24.

[Extractos de fagot con dificultad escalonada | Graded Bassoon Excerpts](#)

<http://imslp.org/imglnks/usimg/f/fc/IMSLP54853-PMLP12213-StraussR-Op24.Bassoon.pdf>

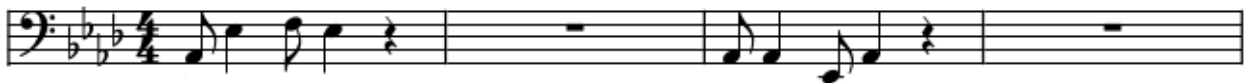


The image shows a musical score for bassoon, consisting of three staves. The first staff begins with a treble clef and a key signature of two flats (B-flat and E-flat). The music is in 4/4 time. The first staff starts with a dynamic marking of *p* (piano) and includes a *cresc.* (crescendo) marking. The second staff continues the piece, also featuring a *cresc.* marking and a *mf* (mezzo-forte) marking. The third staff concludes the excerpt with a *cresc.* marking. The music is characterized by complex rhythmic patterns, including triplets and slurs, and is marked with various articulations such as accents and slurs.

Reproducción de eco | Echo Playing

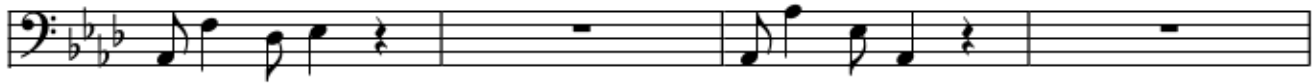
$\text{♩} = 80$

Ewell



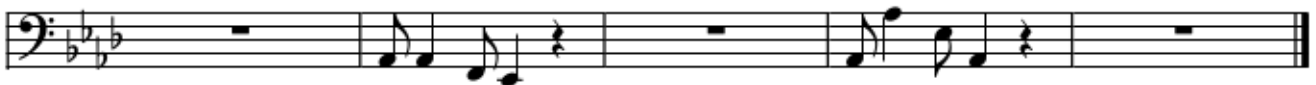
The first staff of the echo playing section shows measures 1 through 4. It begins with a bass clef and a key signature of two flats. The time signature is 4/4. The music consists of a series of eighth and quarter notes, with rests in measures 2 and 4.

5



The second staff of the echo playing section shows measures 5 through 8. It continues the rhythmic pattern from the first staff, with rests in measures 6 and 8.

9



The third staff of the echo playing section shows measures 9 through 12. It concludes the rhythmic pattern with rests in measures 10 and 12.

Método

<https://www.2reed.net/Metodo/>



<https://2reed.net/>

<https://terryewell.com/>

Versión beta | Beta Version